



# Pre-Employment Transition Services & Student Employment Services for Students with Disabilities

Transitioning Youth Fair

April 25, 2026 (11am to 2pm)

Fairmont Heights High School

**PRESENTED BY**

---

**Michael Lumpkins**

# The Division of Rehabilitation Services (DORS)

- DORS is a state agency that offers programs and services that help people with disabilities go to work.
- The mission of DORS is to provide leadership and support in promoting the employment, economic self-sufficiency and independence of individuals with disabilities.

# DORS Services for Students

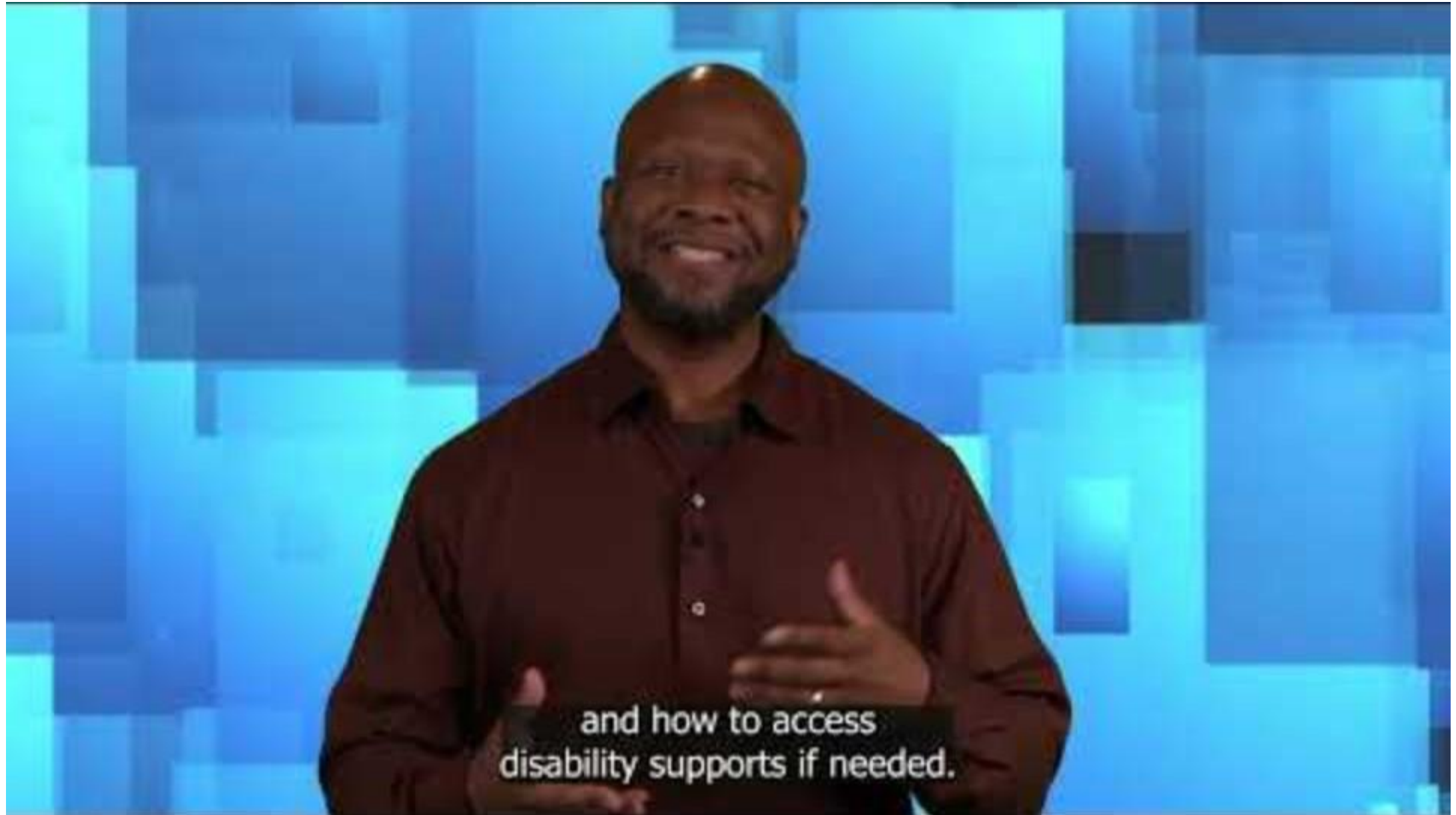
DORS offers two types of services to help students with disabilities prepare for employment:

- Pre-employment Transition Services (Pre-ETS)
- Student Employment Services

A man with short dreadlocks and a goatee, wearing a light blue button-down shirt and dark trousers, is sitting on a wooden stool in a modern kitchen. He is gesturing with both hands as if speaking. The kitchen features a white wall with a long wooden shelf holding various items like glasses, a pitcher, and a vase. To the left, there is a window with a potted aloe vera plant on the sill. In the foreground, a potted plant with large green leaves is visible. The overall atmosphere is bright and professional.

# Pre-Employment Transition Services Pre-ETS

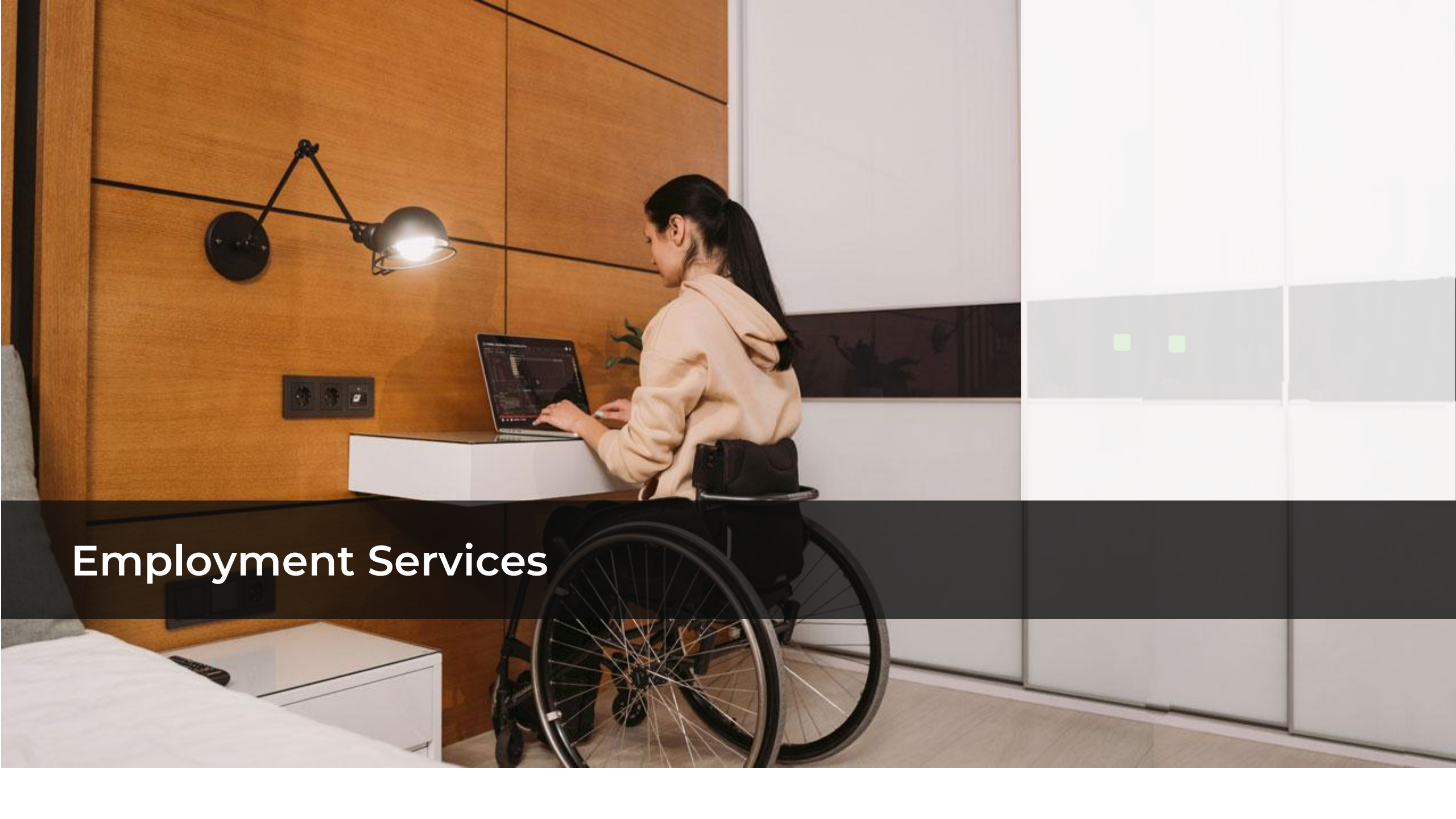
# Pre-ETS



# Qualification for Pre-ETS

To qualify for Pre-ETS, a youth must meet the definition of a Student with a Disability:

- Enrolled in school, post-secondary education, or other recognized educational program and have not exited, graduated, or withdrawn;
- At least 14 years old but less than age 22; and
- Have a disability documented with an IEP, 504 plan, medical records, or a doctor's note.



# Employment Services

# Student Employment Services

**Are you  
a student with  
a disability  
looking to enter  
the workforce?**

with a disability  
looking to enter the workforce?



# Eligibility for Student Employment Services

To be determined eligible for Student Employment Services, a youth must:

- Meet the definition of a Student with a Disability (slide 6)
- Have a physical, emotional, cognitive, sensory, or learning disability that impacts working;
- Have an IEP, 504 plan, or significant health condition, and
- Need employment services to get or keep a job.

# Student Employment Services may Include:

- Pre-ETS
- Counseling & referral
- Career decision making
- Assistance with higher education
- Technical/vocational training
- Assistive technology
- Assessments
- Job preparation
- Job search assistance
- On-the-job training & support
- Supported employment

# Referral Process

- DORS online referral portal or by contacting your local DORS office.

[dors.maryland.gov/consumers/Pages/referral.aspx](https://dors.maryland.gov/consumers/Pages/referral.aspx)

- Both Pre-ETS and Student Employment Services are available on the referral.
- Referral may be completed by anyone: the student, family, school staff, physician, etc.
- Special Education staff are encouraged to refer students for DORS services, however by law they must have written parental consent.

# Qualification & Eligibility

- After intake meeting and receipt of all documentation, DORS staff will determine if the student *qualifies* to receive Pre-ETS as a student with a disability and/or is *eligible* for Student Employment Services.
- Once qualification and/or eligibility is determined, the student will receive a letter providing information about next steps.

**For  
additional  
information,  
please  
contact:**

**Suitland Office**

**5001 Silver Hill Rd Suite 306**

**Suitland, MD 20746**

**301-967-7257**

**Lanham Office**

**4451-Z Parliament Place**

**Lanham, MD 20706**

**301-306-3600**